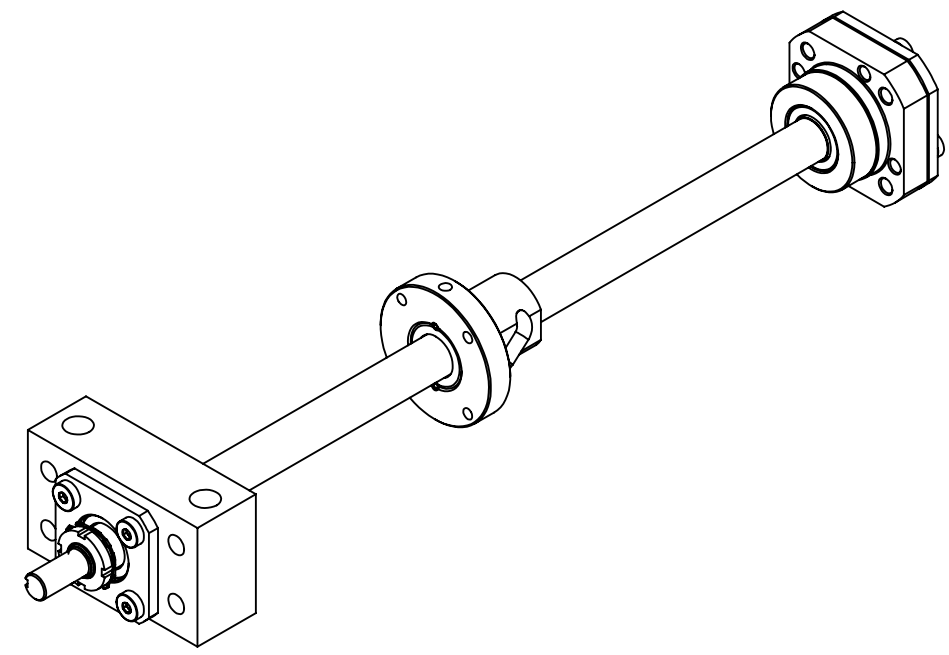
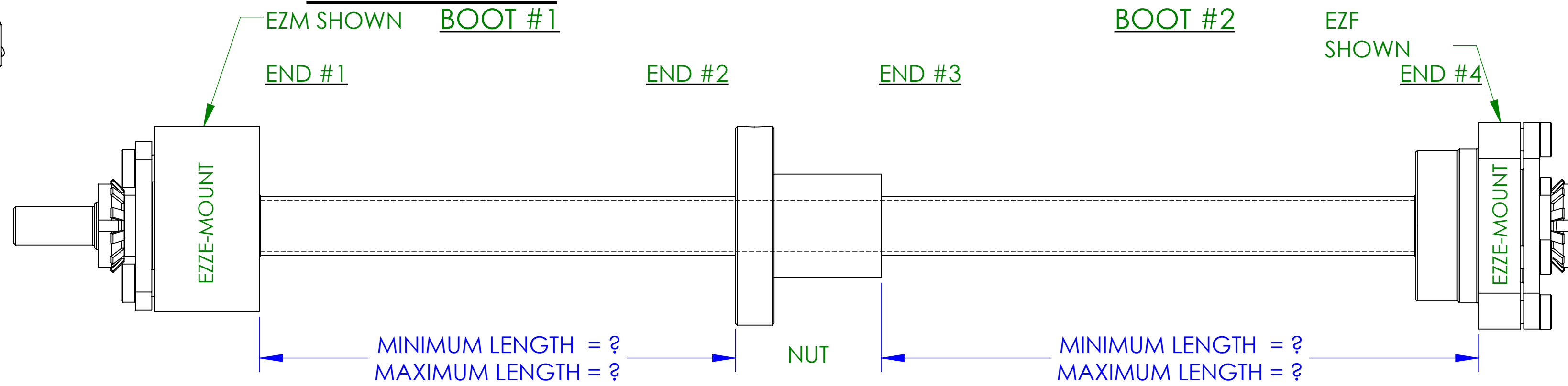


END CONFIGURATION OPTIONS FOR BOOT MOUNTING



ISO VIEW
(REFERENCE ONLY)
(TYPICAL SCREW ASSEMBLY SHOWN)



INSTRUCTIONS:

1. END CONFIGURATION OPTIONS "A" & "E" ARE HELIX STANDARD ENDS FOR MOUNTING TO HELIX COMPONENTS.
2. IF STANDARD END OPTIONS ARE CHOSEN, COMPLETE ONLY THE "STANDARD" SECTION OF THE TABLE BELOW.
3. IF CUSTOM ENDS ARE REQUIRED, COMPLETE BOTH THE "STANDARD" AND "CUSTOM" SECTIONS OF THE TABLE BELOW.
4. IF BELLWS ARE NON-STANDARD, OUTSIDE DIAMETER IS REQUIRED. (REFERENCE TABLE 2), FILL IN CUSTOM "BOD". [NON-STANDARD SMALLER BELLWS OD WILL INCREASE THE MINIMUM (SOLID) COLLAPSED LENGTH OF THE BOOT.]
5. GUIDES ARE RECOMMENDED FOR HORIZONTAL APPLICATIONS WITH MAXIMUM LENGTHS EXCEEDING 24" (NUMBER OF GUIDES DETERMINED BASED ON MAXIMUM TRAVEL/EXTENSION OF BOOT, ONE GUIDE FOR EACH 24", STARTING WITH 1 GUIDE FOR 24" TO 48").
6. TABS, TO PREVENT OVER STRETCHING, ARE RECOMMENDED FOR MAXIMUM LENGTHS EXCEEDING 65"
7. COLLAPSED LENGTH WILL DOUBLE WITH ZIPPER OPTION.

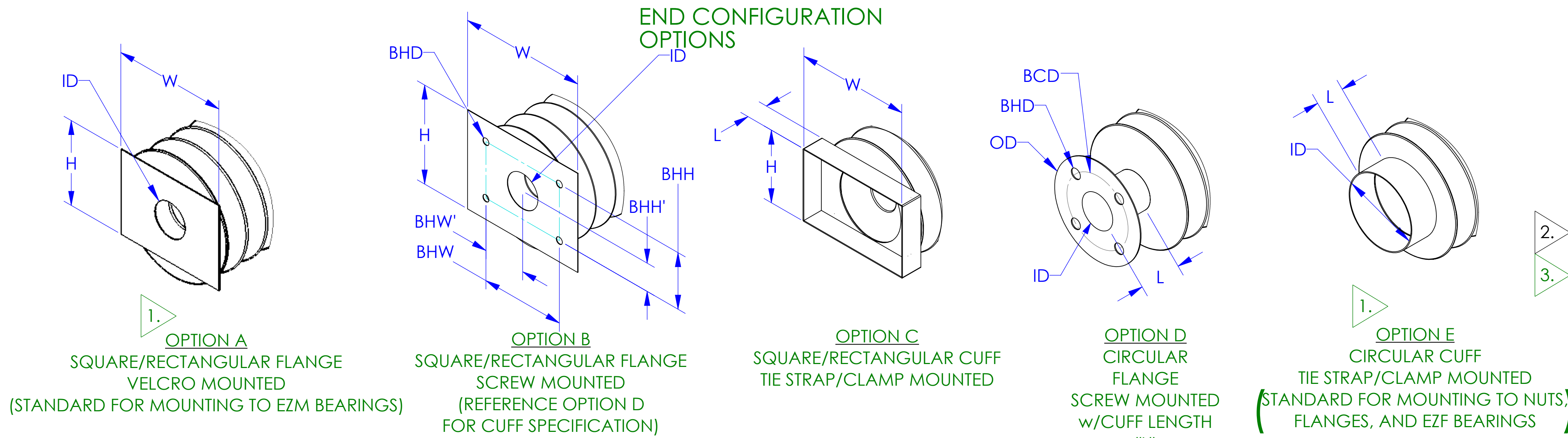
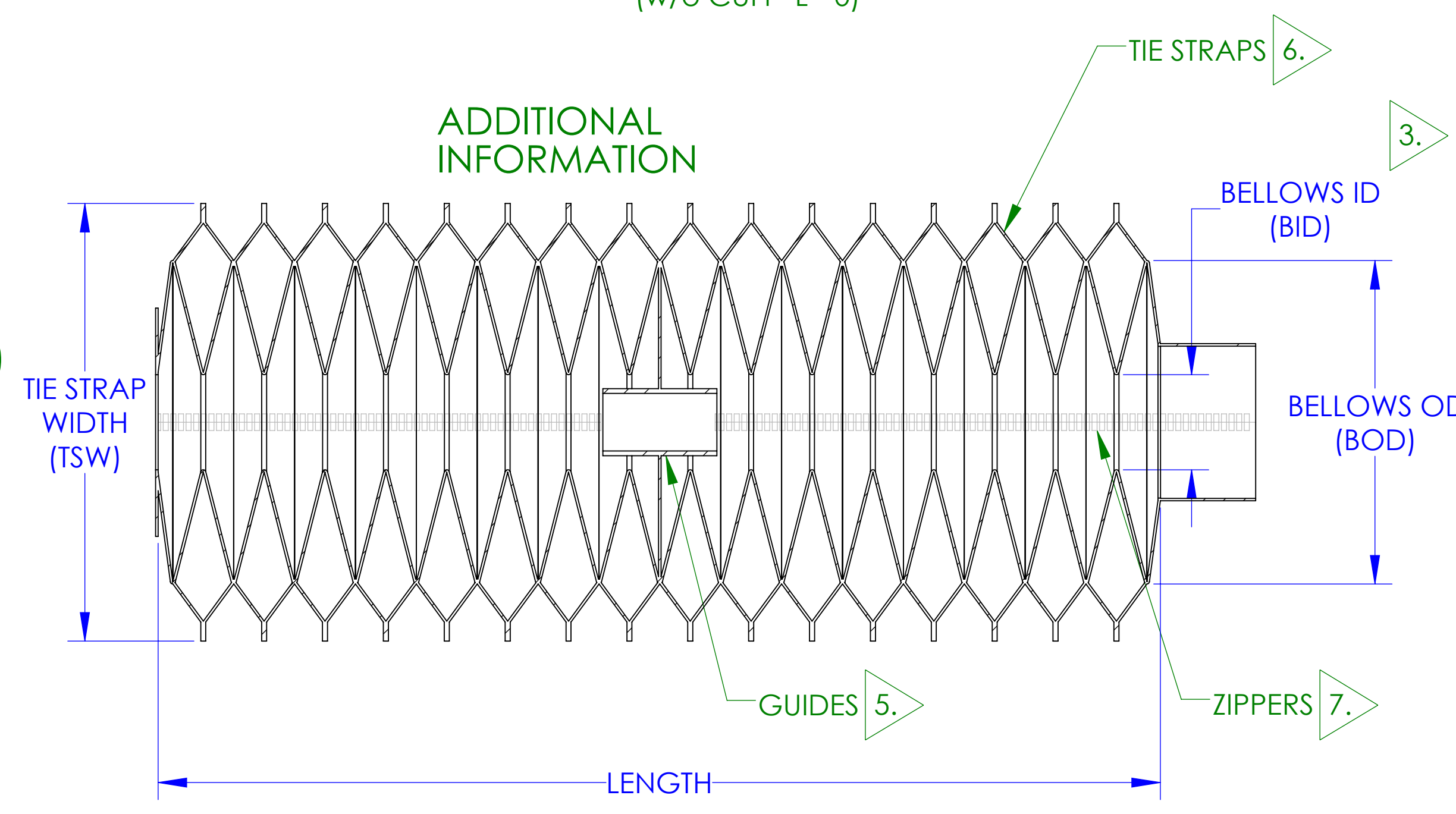


TABLE 1: BOOT MATERIAL SELECTION

DESCRIPTION	TEMPERATURE RANGE	APPLICATION COMMENTS
NEOPRENE-COVERED NYLON (STANDARD)(NCN)	-30°F TO +260°F	OIL, WATER, AND WEATHER RESISTANT
HYPALON-COATED NYLON(HCN)	-30°F TO +300°F	CHEMICAL RESISTANCE, WASH DOWN
SILICONE-COATED FIBERGLASS(SCF)	-67°F TO +550°F	HIGH TEMPERATURE
ALUMINUM-COATED FIBERGLASS(ACF)	-65°F TO +700°F	HIGH TEMPERATURE, HOT CHIPS, WELDING SPLATTER

TABLE 2: STANDARD BOOT DIMENSIONS PER SCREW SIZE (REF.)

SCREW DIA.	BELLWS OUTER Ø (BOD)	BELLWS INNER Ø (BID)	TIE STRAP WIDTH (TSW)
0.625	4.00	1.00	5.50
0.750	4.25	1.25	5.75
1.000 - 1.250	4.50	1.50	6.00
1.500	5.00	2.00	6.50
2.000	5.50	2.50	7.00
2.250	5.75	2.75	7.25
2.500	6.00	3.00	7.50
3.000	7.00	4.00	8.50
3.375	7.50	4.50	9.00
3.750	8.00	5.00	9.50
4.000	9.00	6.00	10.50
4.500	9.50	6.50	11.00
5.000	10.00	7.00	11.50
6.000	11.00	8.00	12.50



	REFERENCE PART NUMBER FOR SCREWS (REFER TO HELIX CATALOG FOR PART STRING)			
	BOOT #1		BOOT #2	
	END #1	END #2	END #3	END #4
END CONFIGURATION				
MINIMUM LENGTH				
MAXIMUM LENGTH				
5. GUIDES (Y/N)				
6. TIE STRAPS (Y/N)				
7. ZIPPERS (Y/N)				
HORIZONTAL OR VERTICAL APPLICATION				
BOOT MATERIAL (TABLE 1)				
CUFF LENGTH (L)				
WIDTH (W)				
HEIGHT (H)				
OUTER DIAMETER (OD)				
INNER DIAMETER (ID)				
BOLT HOLE WIDTH (BHW)				
BOLT HOLE WIDTH' (BHW')				
BOLT HOLE HEIGHT (BHH)				
BOLT HOLE HEIGHT' (BHH')				
BOLT HOLE DIAMETER (BHD)				
BOLT CIRCLE DIAMETER (BCD)				
# OF BOLT HOLES				
BELLWS OD (BOD) (TABLE 2)				
BELLWS ID (BID) (TABLE 2)				

UNLESS OTHERWISE SPECIFIED: DIMENSIONS ARE IN INCHES. TOL ON ANGLE ±1°
1 PL ±.030 2 PL ±.015
3 PL ±.005 FINISH: 125
INTERPRET DIM AND TOL PER ASME Y14.5M - 1994

DR BY: **chris_kahnerf** DATE: _____
CHKD BY: _____ DATE: _____
APPROVED BY: _____ DATE: _____

THIRD ANGLE PROJECTION

THIS DRAWING IS THE PROPERTY OF HELIX LINEAR TECHNOLOGIES AND CANNOT BE REPRODUCED WITHOUT THE EXPRESSED WRITTEN CONSENT OF HELIX LINEAR TECHNOLOGIES

HELIX
LINEAR TECHNOLOGIES

HELIX LINEAR TECHNOLOGIES
23200 COMMERCE PARK
BEACHWOOD, OHIO 44122
USA

TITLE: **BELLWS BOOTS
END CONFIGURATIONS FOR SCREWS**

SIZE: **D** CAGE CODE: **6SWZO** DWG. NO.: **BOOTS FOR SCREWS** REV: **1**
SCALE: 1:2 SHEET 1 OF 1